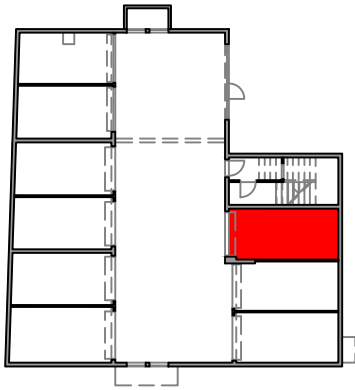


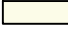




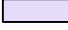
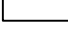


STAN S6A - 2. KAT

Površina stana - 44,4 m² + 16,4 m²

Ukupna površina - 60,8 m²



	Hodnik	---3.6 m ²
	Kupatilo	---3.9 m ²
	Spavaća soba 1	---8,9 m ²
	Dnevni boravak s blagovaonicom	--18.5 m ²
	Kuhinja	---4.5 m ²
	Lođa	---5,0 m ²
	Garažno mjesto G9/a suteren	--16,4 m ²

